



ATWAR ALKON

C O M P A N Y

Second Classification Contracting Company

Kingdom of Saudi Arabia · Est. 2010 · 16+ Years

COMPANY PROFILE

2026

Building Excellence Across the Kingdom

COMPANY OVERVIEW



16+

Years of Experience

500+

Qualified Personnel

4

Operating Divisions

5+

Office Locations

About Atwar Alkon

Atwar Alkon Company is a hundred percent Saudi organization that has been providing professional contracting services for over 16 years. Founded under the sponsorship of advanced intelligent management, the company has successfully expanded from contracting into equipment and materials supply.

With headquarters in Riyadh and branch offices in Jubail, Dammam, Jeddah, and Arar, Atwar Alkon delivers end-to-end construction solutions for government, industrial, and private-sector projects throughout the Kingdom of Saudi Arabia, committed to quality, safety, and national development.

VISION · MISSION · VALUES



OUR VISION

- Recognized as one of the Kingdom's most trusted construction leaders delivering complex industrial and governmental projects
- Aligned with Saudi Arabia's national development objectives — supporting local content, national talent, and domestic industries
- Engineering precision, disciplined project execution, and uncompromising safety standards with lasting partnerships built on integrity and transparency

OUR MISSION

- Deliver end-to-end construction solutions with disciplined project management, robust risk control, and digital monitoring
- Achieve safe, high-quality, on-time delivery for government, industrial, and private-sector clients across the Kingdom
- Build lasting client partnerships grounded in integrity, transparency, and commitment to sustainable communities for future generations

OUR VALUES

- First class quality service to all customers at all times
- Ethical management — building trust with all stakeholders
- Getting it right, on time, every time — on every project

OUR OPERATING DIVISIONS



01

Engineering, Material & Equipment Division

Specialized in general contracting, O&M and HR supply to SABIC, SCECO, Saudi Aramco and international PMT companies. Permanent workforce of 80+ personnel.

02

Turnkey Project Division

End-to-end project delivery from design to handover. Successfully completed 7+ turnkey and shutdown maintenance projects in petrochemical plants and refineries.

03

Inspection Division

Comprehensive QA/QC inspections, testing and certification services ensuring full compliance with international engineering and safety standards.

04

IT Programming, Safety & Security Division

Advanced IT solutions, safety systems and security infrastructure. Platforms include STAAD PRO, Bitrix24 CRM and ERP for manufacturing & quality control.

PROJECT DIVERSITY



Office Buildings & Commercial Centers

Hotels & Recreational Centers

Hospitals & Medical Facilities

Mining Facilities

Schools & Educational Facilities

Infrastructure & Roads

Industrial Complexes & Facilities

Military & Defense Complexes

Oil & Gas Facilities

Power Generation Facilities

Residential & Housing Developments

Petrochemical Plants & Refineries

MAJOR CLIENTS & PARTNERS



■ Almarai Company

■ NADEC – National Agricultural Development Co.

■ Americana Group

■ Saudi Aramco Fuel Stations (SASCO)

■ Ministry of Defense

■ Ministry of Interior – Border Guards Authority

■ General Directorate of Public Security

■ Ministry of Interior – Directorate of Passports

■ Ministry of Health

■ Ministry of National Guard

■ Ministry of Transport and Logistic Services

■ Riyadh Region Municipality

■ Al Othaim Holding Company

■ Petrofast Company

■ Al Nafi'e Steel Company

■ NAFTA Services Company

■ Islamic Educational Foundation

QUALITY MANAGEMENT & HSE POLICY



QUALITY MANAGEMENT

- QA function free from commercial and contractual restraints
- QC procedures implemented consistently across all projects
- Systematic formalized procedures to eliminate deficiencies
- QA/QC Managers, Inspectors, Engineers on every project
- Continuous audits and inspections identifying improvement areas

HEALTH, SAFETY & ENVIRONMENT

- ISO 45001:2018 certified — Occupational Health and Safety Management System covering all contracting activities
- ISO 14001:2015 certified — Environmental Management System ensuring protection and preservation of the environment
- Certified HSE professionals conduct regular training programs for all employees after induction
- HSE embedded as foundation for business growth and success
- Periodic inspection ensuring hygiene and safety at all facilities

HUMAN RESOURCES & EQUIPMENT



WORKFORCE

Atwar Alkon employs qualified personnel across American, European, and Arab nationalities. Management regards employees as the company's most valuable asset, with career development given highest priority.

- QA/QC Managers & Inspectors
- Designers & Structural Engineers
- Technicians & Craftsmen
- CAD Operators & Draughtsmen
- Administrative & Clerical Staff

Employee career development is a top priority, with management regarding the workforce as the company's most valuable asset.

MACHINERY & FLEET

CAT Excavators (336, 395, 365, 330)	24+
CAT Dozers (D8T, D9, D6)	4
Rollers (CAT CS11, PTR, Baby CB2.7)	45+
KOMATSU Excavators (PC850, 400, 220)	16+
Triple Trucks & Dumpers 18-22m ³	20+
JCB Backloder & Bobcats	21+
Asphalt Cutters & Vogeles Pavers	3
Generators (5 KV – 140 KV range)	26+
Toyota Fleet (Hilux, Prado, Fortuner)	63+
Buses, Tankers & Sedan Vehicles	30+

OFFICES & ACCOMMODATION FACILITIES



HEAD OFFICE & BRANCHES

Riyadh
(Head Office)

Jubail
(Branch)

Dammam
(Branch)

Araar
(Branch)

Jeddah
(Branch)

ACCOMMODATION CAMPS

Jubail Camp

250

employees

Dammam Camp

200

employees

Jeddah Camp

150

employees

Rastanura Camp

75

employees

Araar Camp

50

employees

All residential facilities are maintained and periodically inspected to ensure adequacy, hygiene and safety for all employees.

FEATURED PROJECTS



Sports Facilities – AlJouf City

Al-Jouf University · 24 Months

Outdoor stadium (7,250 seats), VIP gallery (3,250), two sport halls, Olympic pool, basketball & volleyball courts, running tracks and electronic display.

Al Bustan Housing Project

Ministry of Housing · 36 Months

Construction of 602 villas across 4 zones with types A, B, C and D — each comprising ground floor, first floor, roof and parking spaces.

132 KV Power Station – Riyadh

SCECO · 18 Months

Full design and construction of high-voltage substation, electrical networks and civil works for the Riyadh region power grid.

Qurayya Independent Power (QIPP 400MW)

Saudi Aramco · 30 Months

400MW power generation facility including civil, structural, mechanical and electrical works across the complete plant lifecycle.

Al Othaim Commercial Complex

Al Othaim Holding · 24 Months

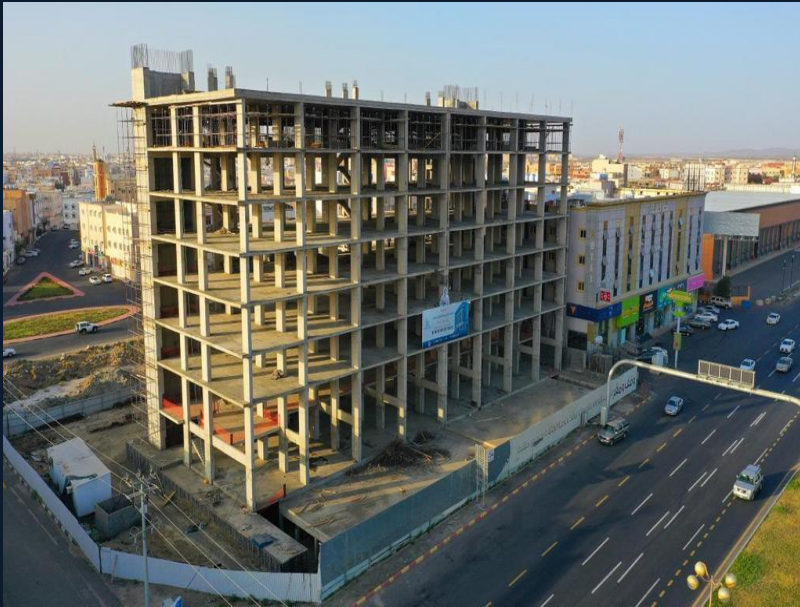
Large-scale commercial development including retail, entertainment and fitness facilities with full fit-out and MEP services.

Strategic Pipeline Project

Saudi Aramco · 18 Months

Long-distance pipeline laying, earthworks and civil infrastructure for Aramco's critical energy transmission network across the Kingdom.

Construction and finishing of the Da'wah and Guidance Building, including all structural, architectural, and MEP works, located in Khamis Mushait

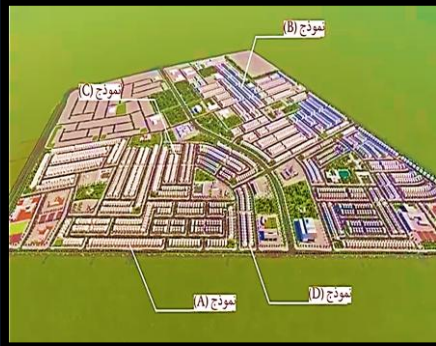


Construction and finishing of a facility for the Quran Memorization Association, including all structural, architectural, and MEP works, located in Khamees Mushait, Asir Region (Abha).



AL BUSTAN HOUSING PROJECT

Our scope of responsibility consists of several zones (7,12,14,15) and contains 602 villas, which are distributed over several areas as mentioned in the plan below. The types of villas include A, B, C, and D, each constituted by ground floor, first floor, roof, and Parking spaces parallel with the street level.



132 KV POWER STATION PROJECT (ALRIYAD – SCECO)

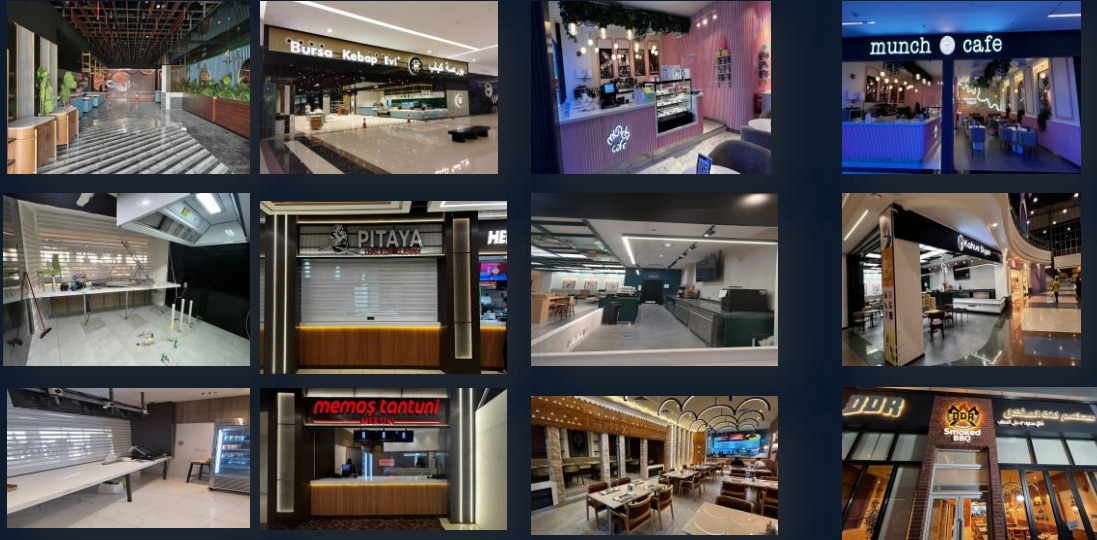


Hamza road Extension and Bridge over wadi Namar - Riyadh



Al Othaim

Many brands have been successfully delivered



Rehabilitation and rebranding of an Aramco fuel station located on the Riyadh–Qassim Highway, covering an approximate area of 334,000 m².



Construction of Main Gates at Nadec Agricultural City in Haradh (5 gates)



Execution and successful handover of multiple road construction projects in NADEC City – Haradh, including excavation and backfilling works, asphalt paving, and integration of internal road networks with main external highways.



DISTRIBUTION CENTER, STAFF ACCOMMODATION, AND OFFICE BUILDING

NADEC – EL MAJMAA



Design, construction, and finishing of a fully equipped mock village, including all structural and architectural works, at King Khalid Military City, Hafar Al-Batin.



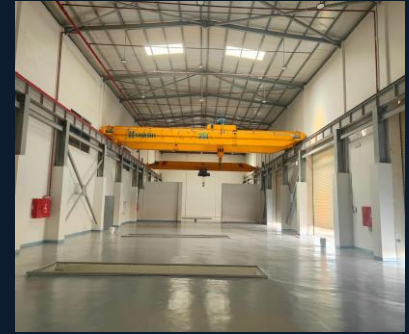
Design and construction of a European-style VIP tent at King Khalid Military City



Design and construction of an agricultural laboratory and Greenhouse at Nadec City, Hail



The project, affiliated with the Land Forces of the Ministry of Defense, involves the construction and finishing of four military vehicle maintenance workshops, each equipped with 15 and 25-ton cranes, located in the cities of Arar, Turaif, Rafha, and Hafr Al-Batin



OUR PROJECTS

ATWAR ALKON

Warehouse project in Dammam city, affiliated with Al-Nafi Steel Company, comprising a warehouse, administrative buildings, and general site works.



Construction of two warehouses affiliated with the Command of the Madinah Region - Land Forces - Ministry of Defense in the city of Madinah



Sanitary Sewer Network
Replacement Project in Al-Taawun
District at King Khalid Military
City, Hafr Al-Batin



Key Infrastructure Projects

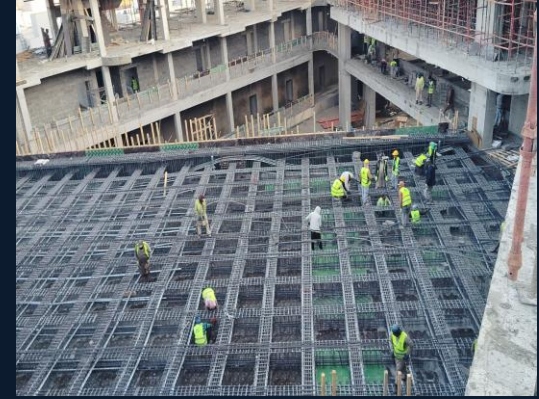
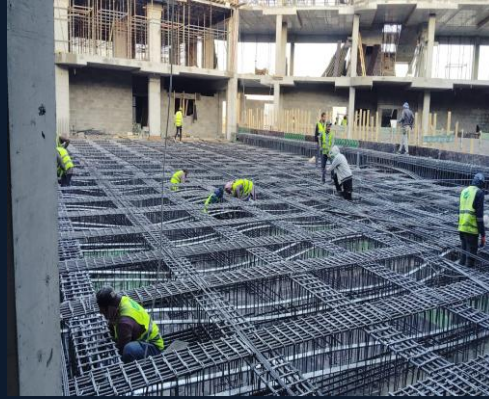
Our infrastructure portfolio covers the execution of integrated civil and utility works, including:

- Roadworks & Pavement Construction
- Water Supply Networks
- Sewerage & Drainage Systems
- Electrical & Utility Networks
- Site Development & Earthworks

We deliver infrastructure solutions that ensure operational efficiency, long-term durability, and compliance with national standards, supporting both public and private sector developments across the Kingdom.



Construction and full fit-out of Mawahib Schools in Abha, including civil, architectural, and interior works in accordance with project specifications.





1

Bitrix24

Project Management & CRM

Central platform for project management, collaboration and communication. Enables real-time task coordination, progress tracking and resource management — from task assignment and time tracking to document management.

2

STAAD PRO Connect

Structural Engineering Design

STAAD PRO CONNECT EDITION 22.00 for advanced structural engineering design and analysis, ensuring compliance with international building codes and engineering standards across all construction projects.

3

ERP Application

Manufacturing & Quality Control

Enterprise Resource Planning solution managing manufacturing processes, quality control and business operations with full integration across all divisions, sites and project management functions.



ATWAR ALKON

Building Excellence Across the Kingdom

Built on trust. Delivered with excellence.

CONTACT US

Head Office: Riyadh, Kingdom of Saudi Arabia · info@atwaralkon.com.sa ·
0594570197

Branches: Jubail · Dammam · Araar · Jeddah